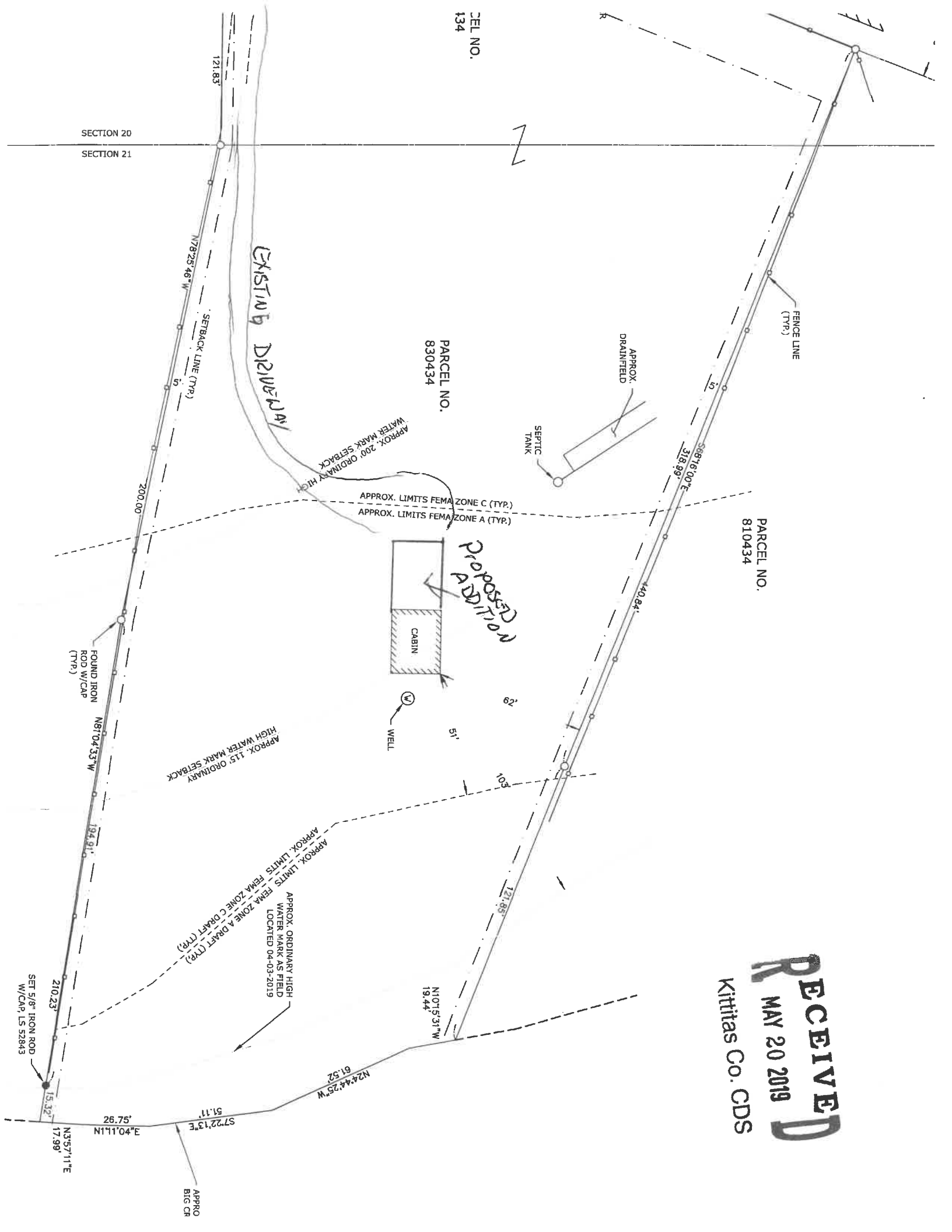


RECEIVED
MAY 20 2019
Kittitas Co. CDS



CEL NO.
134

PARCEL NO.
830434

PARCEL NO.
810434

CABIN

WELL

SEPTIC TANK

DRAINFIELD

FENCE LINE (TYP.)

EXISTING DRIVEWAY

PROPOSED ADDITION

APPROX. LIMITS FEMA ZONE C (TYP.)
APPROX. LIMITS FEMA ZONE A (TYP.)

APPROX. 200' ORDINARY HIGH WATER MARK SETBACK

APPROX. 115' ORDINARY HIGH WATER MARK SETBACK

APPROX. LIMITS FEMA ZONE A DRAFT (TYP.)
APPROX. LIMITS FEMA ZONE C DRAFT (TYP.)
APPROX. ORDINARY HIGH WATER MARK AS FIELD LOCATED 04-03-2019

APPROX. BIG CR

SECTION 20
SECTION 21

SET 5/8" IRON ROD W/CAP, LS 52843

FOUND IRON ROD W/CAP (TYP.)